



Exploring new near-infrared fluorescent disulfide-based cyclic RGD peptide analogs for potential integrin-targeted optical imaging

Yunpeng Ye^a, Baogang Xu^a, Gregory V. Nikiforovich^{b,†}, Sharon Bloch^a, Samuel Achilefu^{a,b,*}

^a Department of Radiology, Washington University School of Medicine, 4525 Scott Avenue, St. Louis, MO 63110, USA

^b Department of Biochemistry & Molecular Biophysics, Washington University School of Medicine, 4525 Scott Avenue, St. Louis, MO 63110, USA

ARTICLE INFO

Article history:

Received 28 December 2010

Revised 26 January 2011

Accepted 28 January 2011

Available online 23 February 2011

Keywords:

Disulfide-based cyclization

RGD peptide

Integrin $\alpha_v\beta_3$ binding

Near-infrared fluorescent probe

Optical imaging

ABSTRACT

We synthesized disulfide-based cyclic RGD pentapeptides bearing a near-infrared fluorescent dye (cypate), represented by cypate- ϵ (CRGDC) (**1**) for integrin-targeted optical imaging. These compounds were compared with the traditional lactam-based cyclic RGD counterpart, cypate- ϵ (RGDFK) (**2**). Molecular modeling suggests that the binding affinity of **2** to integrin $\alpha_v\beta_3$ is an order of magnitude higher than that of **1**. This was confirmed experimentally, which further showed that substitution of Gly with Pro, Val and Tyr in **1** remarkably hampered the $\alpha_v\beta_3$ binding. Interestingly, cell microscopy with A549 cells showed that **1** exhibited higher cellular staining than **2**. These results indicate that factors other than receptor binding affinity to $\alpha_v\beta_3$ dimeric proteins mediate cellular uptake. Consequently, **1** and its analogs may serve as valuable molecular probes for investigating the selectivity and specificity of integrin targeting by optical imaging.

© 2011 Elsevier Ltd. All rights reserved.

The RGD (arginine-glycine-aspartic acid) tripeptide motif plays an essential role in the molecular recognition of integrin $\alpha_v\beta_3$ and some other integrin subtypes.^{1–6} The overexpression of integrin $\alpha_v\beta_3$ found in various types of tumors and neo-vasculatures and this dimeric protein complex is involved in regulating tumor growth, angiogenesis, and metastasis. Therefore, RGD-based integrin $\alpha_v\beta_3$ targeting has provided an effective approach for improving tumor imaging and drug delivery. Cyclic RGD compounds such as the conventional lactam-based cyclic pentapeptide ϵ (RGDFK) (where “ ϵ ” represents D-phenylalanine) exhibit remarkable binding affinity and selectivity for integrin $\alpha_v\beta_3$.^{7–9} For example, [¹⁸F]galacto-RGD and cilengitide have been tested for cancer imaging and therapy in the clinic.^{7,10–12}

Despite some promising results, many aspects of integrin targeting, tumor imaging, and therapy that employ RGD peptides remain unclear.¹³ In particular, integrins have 24 subtypes through different combinations of α and β subunits.^{14,15} Therefore, it is important to explore novel integrin-targeted ligands that are distinguishable from ϵ (RGDFK) in structure as well as in receptor binding selectivity and specificity. We envision that such compounds with different structural and functional features may further enhance our understanding of integrin expressions, signal transduction, and their roles in cancer biology and pathology.

Over the past years, various types of disulfide-based cyclic RGD peptides have been reported.^{16–27} Recently, an internalizing disulfide bond-containing RGD peptide, called **IRGD**, has been developed to enhance both cancer detection and treatment by deep tissue penetration.^{6,28} Nevertheless, such cyclic RGD peptides have not been explored fully for integrin targeting and tumor imaging compared to the conventional lactam-based cyclic RGD peptide analogs. Optical imaging has emerged as a powerful modality for studying molecular recognition and molecular imaging in a noninvasive, sensitive, and real-time way. The advantages of optical imaging include cost-effectiveness, convenience, and safety. The method is also complementary to other imaging modalities such as positron emission tomography (PET), single-photon emission computed tomography (SPECT), and magnetic resonance imaging (MRI). Considerable advances have been made in tumor optical imaging by using integrin-targeting compounds in both preclinical and clinical studies.^{11,29–37}

In this work, we synthesized a disulfide-based cyclic penta-RGD peptides conjugated with a near-infrared fluorescent carbocyanine dye (cypate) (**1**) and its analogs for potential integrin targeting and optical imaging (Fig. 1). They were evaluated for their integrin $\alpha_v\beta_3$ binding and cellular staining in comparison with a lactam-based cypate- ϵ (RGDFK) (**2**),³⁸ where the cypate moiety was connected to the ϵ -amino group of lysine.

Based on the previous methods for synthesis of cypate-peptide conjugates on solid support,³⁷ we used a similar strategy to prepare the disulfide cyclic RGD peptides and their conjugates. The protected RGD peptide Fmoc-C(Acm)-R(Pbf)-G-D(OBut)-C(Acm)

* Corresponding author. Fax: +1 314 747 5191.

E-mail address: achilefu@mir.wustl.edu (S. Achilefu).

URL: <http://www.orl.wustl.edu> (S. Achilefu).

[†] Present address: MolLife Design LLC, St. Louis, MO, USA.

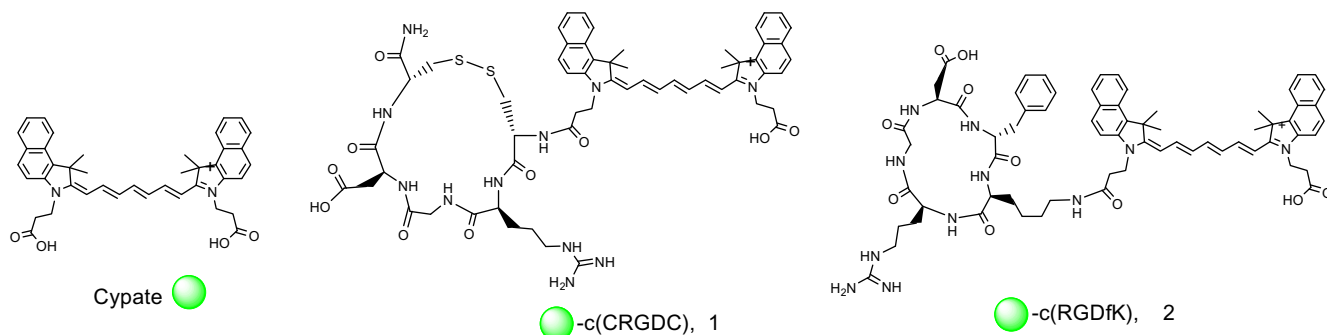
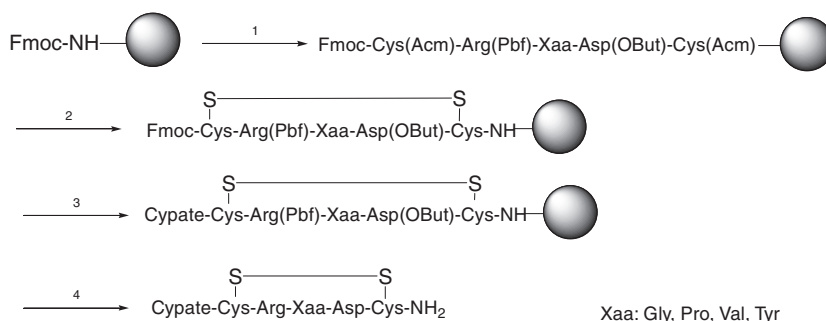


Figure 1. The two types of cyclic RGD pentapeptides bearing a near-infrared fluorescent dye, cypate.



Reagents and condition: 1. Peptide assembly using Fmoc chemistry; 2. $\text{Ti}(\text{CF}_3\text{COO})_3/\text{DMF}$; 3. (a) piperidine/DMF(20%); (b) Cypate/HOBt/DIC/DMF; 4. TFA/water(95:5).

Scheme 1. Synthesis of cypate-labeling cyclic disulfide RGD peptide.

was first assembled on Rink amide MBHA resin (1 equiv) using conventional Fmoc chemistry (Scheme 1). The disulfide-based cyclization was realized by swirling the resin-bound peptide with a solution of $\text{Ti}(\text{F}_3\text{CCOO})_3$ in DMF for 2 h, yielding the disulfide-containing cyclic peptide on a resin, Fmoc-c[CR(Pbf)GD(OBt)C]-resin.^{39,40} After the Fmoc protecting group was removed with piperidine/DMF, the free amino group at the N-terminus was conjugated with cypate in the presence of DIC and HOBt. Finally, the desired product, cypate-c(CRGDC)-NH₂ (**1**) was cleaved from the resin with aqueous TFA (95%) and purified by semi-preparative HPLC.

Similarly, several analogs were also successfully synthesized by varying the glycine residue with other amino acids including Pro, Val, and Tyr (**3**, **4**, and **5**), as shown in Table 1. In addition, we synthesized the lactam-based cyclic RGD peptides: cypate-c(RGDfK) (**2**) and c(RGDfV) (**6**) for comparison.³⁸ As reported previously,³⁷ we also identified the simultaneous formation of their dimeric analogs such as the dimeric analog of **1** cypate-[c(CRGDC)]₂ (**7**) (ES-MS: $[\text{MH}_2]^{2+}$ 1000.05, $[\text{MH}_3]^{3+}$ 667.35, and $[\text{MH}_4]^{4+}$ 500.70) as shown in Scheme 2. All the dimeric analogs showed shorter retention

time compared to their monomeric analogs, but its yield was low compared to the monomeric analogs.

All the compounds were fully identified by both HPLC and ESI-MS after semi-preparative HPLC purification. As shown in Figure 2, all the compounds have similar UV-vis absorption and fluorescence emission spectra ($\lambda_{\text{max}}^{\text{abs}}$ 783 nm and $\lambda_{\text{max}}^{\text{em}}$ 808 nm) in the near-infrared region in 20% aqueous DMSO.

Integrin $\alpha_v\beta_3$ binding affinities were determined based on the competitive binding between purified integrin $\alpha_v\beta_3$ and peptide ligands using radiolabeled echistatin as a tracer. Echistatin is a polypeptide that binds irreversibly with high affinity and specificity to the integrin $\alpha_v\beta_3$. In particular, ¹²⁵I-echistatin has been widely used as a tracer in integrin $\alpha_v\beta_3$ binding assays.^{41–43} The lactam-based cyclic RGD pentapeptide, c(RGDfV), was used as a reference standard because it is known to bind integrin $\alpha_v\beta_3$ with high affinity.^{8,29} The obtained IC₅₀ values are summarized in Table 1. The disulfide cyclic pentapeptide (**1**) showed lower receptor binding affinity compared to the two lactam-based cyclic RGD pentapeptide **2** and c(RGDfV), both of which display similar binding affinity. This might be ascribed to the more flexible structure of **1** compared to the lactam-based analog **2**, as was further confirmed by molecular modeling.

Molecular modeling performed according to energy calculation protocol described elsewhere⁴⁴ found 24 low-energy conformations of the peptide backbone for compound **6**, 18 for compound **2** and 68 for compound **1**. Expectedly, RGD peptide analogs with more compatible conformations to the structure of c(R¹-G²-D³-F⁴-NMe-V⁵) in complex with integrin $\alpha_v\beta_3$ (as revealed by the X-ray spectroscopy¹⁵) display tighter specific binding to integrin $\alpha_v\beta_3$. Upon overlapping of C α -atoms in the 'template' X-ray structure of c(R¹-G²-D³-F⁴-NMe-V⁵) to the corresponding atoms of com-

Table 1
The major ES-MS peaks and integrin $\alpha_v\beta_3$ binding affinities of **1**, **2**, and their analogs

Entry no.	Compounds	$[\text{MH}]^+ / [\text{MH}_2]^{2+}$	IC ₅₀ (M)
1	Cypate-c(CRGDC)	1157/579	4.6×10^{-6}
2	Cypate-c(RGDfK)	1210/606	7.2×10^{-7}
3	Cypate-c(CRPDC)	1196/598	$>10^{-5}$
4	Cypate-c(CRVDC)	1198/600	$>10^{-5}$
5	Cypate-c(CRYDC)	1262/632	$>10^{-5}$
6	c(RGDfV)	575	3.25×10^{-7}

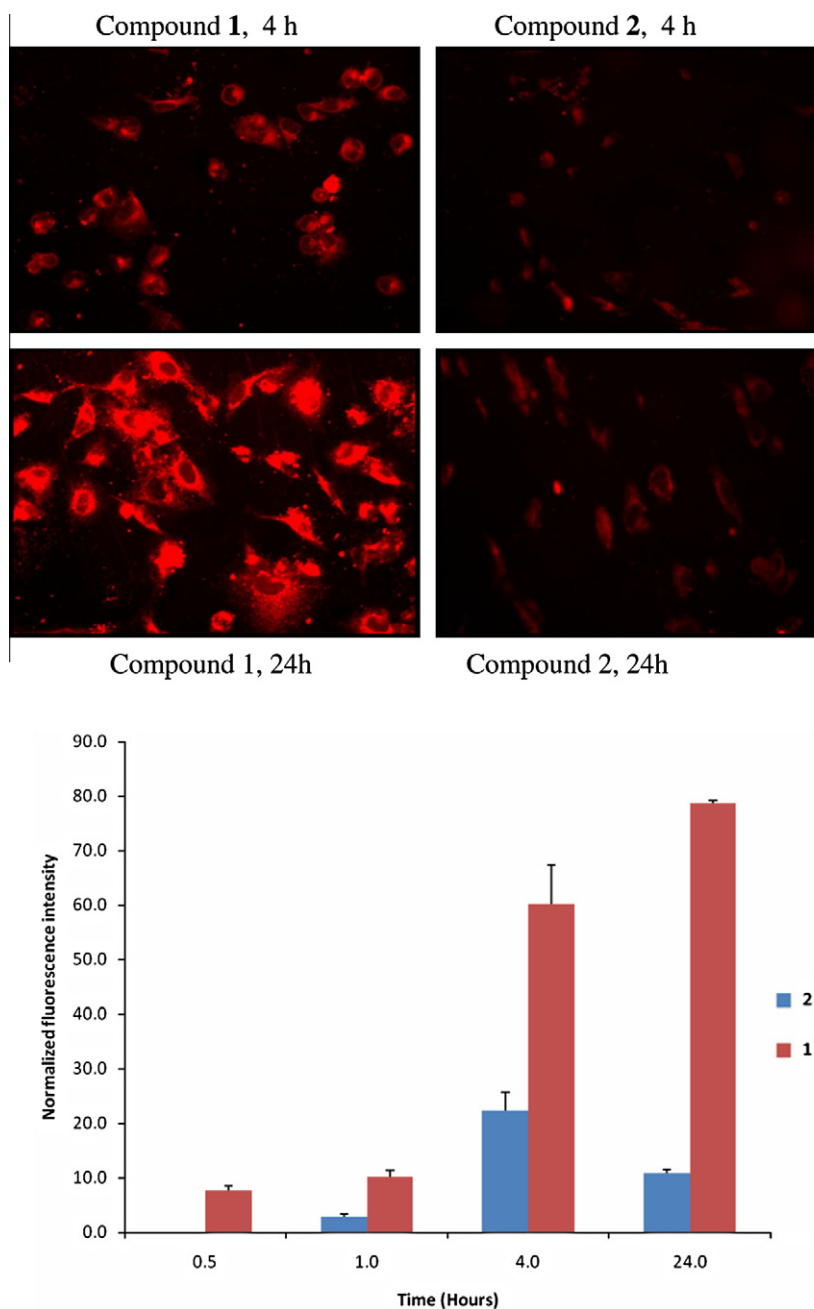


Figure 4. Representative fluorescence images of live A549 cells (top) and relative fluorescence intensity of cellular staining after incubation of A549 cells (bottom) with compounds **1** and **2** at 1 μ M.

suggests the potential use of this class of RGD for imaging and treating cancer cells. These preliminary data suggest that, besides the receptor binding affinities, receptor binding selectivity and other structural factors such as lipophilicity may also play important roles in the cellular internalization. Therefore, all the disulfide RGD compounds synthesized for this study deserve further investigation *in vitro* and *in vivo*. Further work is underway to unravel the integrin selectivity, signal transduction, and related biological activities as well as its potential in integrin-targeted tumor imaging as we reported previously.^{29,37}

This work further demonstrated that the dicarboxylic acid-containing cypate can serve as a scaffold for constructing diverse near-infrared fluorescent agents for optical imaging as we reported previously.³⁷ Especially, the compound **1** can serve as an attractive template for further molecular design and structural modification

to discover some novel innovative integrin-targeted agents for tumor optical imaging, therapy, and drug delivery. For example, a library of novel diverse disulfide RGD peptides can be synthesized by solid phase peptide synthesis. The acid group at the side chain of cypate motif also provides a site for structural modification to improve the physicochemical properties and integrin targeting ability. As described above, some dimeric analogs bearing two disulfide RGD peptide motifs such as **7** can be obtained simultaneously. All these will provide some insights into molecular design and structural modifications to further improve the integrin-targeting activities.

In summary, we have prepared and evaluated some cypate-labeled near-infrared fluorescent disulfide-based cyclic RGD peptide analogs. Although **1** has relatively lower receptor binding affinity for integrin $\alpha_v\beta_3$ compared to **2**, it exhibited higher cellular stain-

ing. This class of near-infrared fluorescent RGD compounds deserve further exploration for their integrin targeting in cancer biology, optical imaging, and targeted therapy.

Acknowledgment

This work was supported in part by the US National Institutes of Health grants from the NIBIB (R01EB00811 and R01 EB007276) and the NCI (R33 CA123537 and R01CA109754).

Supplementary data

Supplementary data associated with this article can be found, in the online version, at [doi:10.1016/j.bmcl.2011.01.133](https://doi.org/10.1016/j.bmcl.2011.01.133).

References and notes

- Assa-Munt, N.; Jia, X.; Laakkonen, P.; Ruoslahti, E. *Biochemistry* **2001**, *40*, 2373.
- Pasqualini, R.; Koivunen, E.; Ruoslahti, E. *Nat. Biotechnol.* **1997**, *15*, 542.
- Ruoslahti, E. *Annu. Rev. Cell Dev. Biol.* **1996**, *12*, 697.
- Ruoslahti, E. *Matrix Biol.* **2003**, *22*, 459.
- Ruoslahti, E.; Pierschbacher, M. D. *Science* **1987**, *238*, 491.
- Sugahara, K. N.; Teesalu, T.; Karmali, P. P.; Kotamraju, V. R.; Agemy, L.; Girard, O. M.; Hanahan, D.; Mattrey, R. F.; Ruoslahti, E. *Cancer Cell* **2009**, *16*, 510.
- Heckmann, D.; Kessler, H. *Methods Enzymol.* **2007**, *426*, 463.
- Dechantsreiter, M. A.; Planker, E.; Mathä, B.; Lohof, E.; Hölzemann, G.; Jonczyk, A.; Goodman, S. L.; Kessler, H. *J. Med. Chem.* **1999**, *42*, 3033.
- Pfaff, M.; Tangemann, K.; Müller, B.; Gurrath, M.; Müller, G.; Kessler, H.; Timpl, R.; Engel, J. *J. Biol. Chem.* **1994**, *269*, 20233.
- Haubner, R.; Kuhnast, B.; Mang, C.; Weber, W. A.; Kessler, H.; Wester, H. J.; Schwaiger, M. *Bioconjug. Chem.* **2004**, *15*, 61.
- Schottelius, M.; Laufer, B.; Kessler, H.; Wester, H. J. *Acc. Chem. Res.* **2009**, *42*, 969.
- Tucker, G. C. *Curr. Opin. Investig. Drugs* **2003**, *4*, 722.
- Reynolds, A. R.; Hart, I. R.; Watson, A. R.; Welti, J. C.; Silva, R. G.; Robinson, S. D.; Da Violante, G.; Gourlaouen, M.; Salih, M.; Jones, M. C.; Jones, D. T.; Saunders, G.; Kostourou, V.; Perron-Sierra, F.; Norman, J. C.; Tucker, G. C.; Hodivala-Dilke, K. M. *Nat. Med.* **2009**, *15*, 392.
- Kim, M.; Carman, C. V.; Springer, T. A. *Science* **2003**, *301*, 1720.
- Xiong, J. P.; Stehle, T.; Diefenbach, B.; Zhang, R.; Dunker, R.; Scott, D. L.; Joachimiak, A.; Goodman, S. L.; Arnaout, M. A. *Science* **2001**, *294*, 339.
- Duggan, M. E.; Naylor-Olsen, A. M.; Perkins, J. J.; Anderson, P. S.; Chang, C. T.-C.; Cook, J. J.; Gould, R. J.; Ihle, N. C.; Hartman, G. D. *J. Med. Chem.* **1995**, *38*, 3332.
- Mukhopadhyay, S.; Barnés, C. M.; Haskel, A.; Short, S. M.; Barnes, K. R.; Lippard, S. J. *Bioconjug. Chem.* **2008**, *19*, 39.
- Yamada, T.; Kidera, A. *FEBS Lett.* **1996**, *387*, 11.
- Yamada, T.; Uyeda, A.; Kidera, A.; Kikuchi, M. *Biochemistry* **1994**, *33*, 11678.
- Kimura, R. H.; Cheng, Z.; Gambhir, S. S.; Cochran, J. R. *Cancer Res.* **2009**, *69*, 2435.
- Miao, Z.; Ren, G.; Liu, H.; Kimura, R. H.; Jiang, L.; Cochran, J. R.; Gambhir, S. S.; Cheng, Z. *Bioconjug. Chem.* **2009**, *20*, 2342.
- Beer, A. J.; Schwaiger, M. *Cancer Metastasis Rev.* **2008**, *27*, 631.
- Edwards, D.; Jones, P.; Haramis, H.; Battle, M.; Lear, R.; Barnett, D. J.; Edwards, C.; Crawford, H.; Black, A.; Godden, V. *Nucl. Med. Biol.* **2008**, *35*, 365.
- Yin, R.; Zheng, H.; Xi, T.; Xu, H. M. *Bioconjug. Chem.* **2010**, *21*, 1142.
- Kim, J. W.; Lee, H. S. *Int. J. Mol. Med.* **2004**, *14*, 529.
- Nagel, H.; Maag, S.; Tassis, A.; Nestlé, F. O.; Greber, U. F.; Hemmi, S. *Gene Ther.* **2003**, *10*, 1643.
- Smolarczyk, R.; Cichoń, T.; Graja, K.; Hucz, J.; Sochanik, A.; Szala, S. *Acta Biochim. Pol.* **2006**, *53*, 801.
- Sugahara, K. N.; Teesalu, T.; Karmali, P. P.; Kotamraju, V. R.; Agemy, L.; Greenwald, D. R.; Ruoslahti, E. *Science* **2010**, *328*, 1031.
- Achilefu, S.; Bloch, S.; Markiewicz, M. A.; Zhong, T.; Ye, Y.; Dorshow, R. B.; Chance, B.; Liang, K. *Proc. Natl. Acad. Sci. U.S.A.* **2005**, *102*, 7976.
- Cai, W.; Chen, K.; Li, Z. B.; Gambhir, S. S.; Chen, X. J. *Nucl. Med.* **2007**, *48*, 1862.
- Cai, W.; Shin, D. W.; Chen, K.; Gheysens, O.; Cao, Q.; Wang, S. X.; Gambhir, S. S.; Chen, X. *Nano Lett.* **2006**, *6*, 669.
- Chen, X.; Conti, P. S.; Moats, R. A. *Cancer Res.* **2004**, *64*, 8009.
- Cheng, Z.; Wu, Y.; Xiong, Z.; Gambhir, S. S.; Chen, X. *Bioconjug. Chem.* **2005**, *16*, 1433.
- Jin, Z. H.; Josserand, V.; Razkin, J.; Garanger, E.; Boturyn, D.; Favrot, M. C.; Dumy, P.; Coll, J. L. *Mol. Imaging* **2006**, *5*, 188.
- Li, C.; Wang, W.; Wu, Q.; Ke, S.; Houston, J.; Seveck-Muraca, E.; Dong, L.; Chow, D.; Charnsangavej, C.; Gelovani, J. G. *Nucl. Med. Biol.* **2006**, *33*, 349.
- Liu, Z.; Liu, S.; Niu, G.; Wang, F.; Liu, S.; Chen, X. *Mol. Imaging* **2010**, *9*, 21.
- Ye, Y.; Bloch, S.; Xu, B.; Achilefu, S. *J. Med. Chem.* **2006**, *49*, 2268.
- Ye, Y.; Bloch, S.; Xu, B.; Achilefu, S. *Bioconjug. Chem.* **2008**, *19*, 225.
- Edwards, W. B.; Fields, C. G.; Anderson, C. J.; Pajeau, T. S.; Welch, M. J.; Fields, G. B. *J. Med. Chem.* **1994**, *37*, 3749.
- Limal, D.; Briand, J. P.; Dalbon, P.; Jolivet, M. J. *Pept. Res.* **1998**, *52*, 121.
- Chen, X.; Hou, Y.; Tohme, M.; Park, R.; Khankaldyian, V.; Gonzales-Gomez, I.; Bading, J. R.; Laug, W. E.; Conti, P. S. *J. Nucl. Med.* **2004**, *45*, 1776.
- Hantgan, R. R.; Stahle, M. C.; Connor, J. H.; Horita, D. A.; Rocco, M.; McLane, M. A.; Yakovlev, S.; Medved, L. *Protein Sci.* **2006**, *15*, 1893.
- Kumar, C. C.; Nie, H.; Rogers, C. P.; Malkowski, M.; Maxwell, E.; Catino, J. J.; Armstrong, L. J. *Pharmacol. Exp. Ther.* **1997**, *283*, 843.
- Ye, Y.; Li, W.; Anderson, C. J.; Kao, J.; Nikiforovich, G. V.; Achilefu, S. *J. Am. Chem. Soc.* **2003**, *125*, 7766.
- Nowlin, D. M.; Gorcsan, F.; Moscinski, M.; Chiang, S. L.; Lobl, T. J.; Cardarelli, P. M. *J. Biol. Chem.* **1993**, *268*, 20352.
- Yang, W.; Meng, L.; Wang, H.; Chen, R.; Wang, R.; Ma, X.; Xu, G.; Zhou, J.; Wang, S.; Lu, Y.; Ma, D. *Oncol. Rep.* **2006**, *15*, 113.